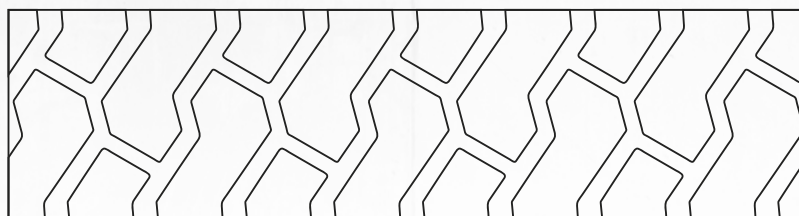




MS701

SOLID TYRES - INDUSTRIAL PRO



The Maxam MS701 is a premium, three compound solid resilient tyre that incorporates a full-sized wide and flat profile, reinforced shoulder and multi-layer construction for prolonged tyre life and enhanced durability.

- Three compound construction.
- Wear and cut resistant tread compound.
- Smooth running.
- Low rolling resistance.
- Heat resistant tread compound.

SIZE	PATTERN	RIM	OVERALL DIAMETER (mm)	SECTION WIDTH (mm)	TREAD DEPTH (mm)
5.00-8	MS701	3.00D	450	122	36
6.00-9	MS701	4.00E	523	137	43
6.50-10	MS701	5.00F	566	163	51
7.00-12	MS701	5.00S	653	173	56
28x9-15	MS701	7.00	686	218	51
8.25-15	MS701	6.50	813	211	71

E&OE. All measurements are based on Maxam and industry standards. Physical tyre measurements may vary slightly.