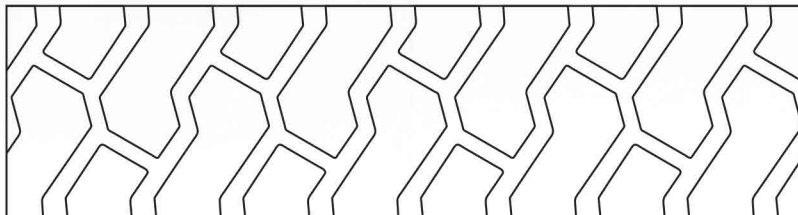




MS701

SOLID TYRES - INDUSTRIAL PRO



The Maxam MS701 is a premium, three compound solid resilient tyre that incorporates a full-sized wide and flat profile, reinforced shoulder and multi-layer construction for prolonged tyre life and enhanced durability.

- Three compound construction.
- Wear and cut resistant tread compound.
- Smooth running.
- Low rolling resistance.
- Heat resistant tread compound.

MAXAMTYRES.COM.AU